



MILITARY MOUNTAIN SCHOOL / COEMW

BOHINJSKA BELA

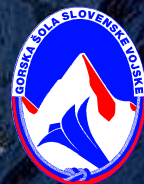
LTC BLAZNIK Boštjan





CONTENTS

- COE MW CURRENT DEVELOPMENT
- COE MW STATUS&LOCATION
- ORGANISATION NETWORK
- CORE AREAS
- QUESTIONS





CURRENT COE MW DEVELOPMENT

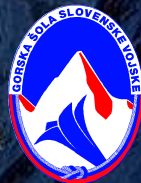
- NEW COURSE OF ACTION
- CONCEPT HAS BEEN REDEVELOPED
- DRAFT MOU HAS BEEN REDEVELOPED
- ACTION PLAN HAS BEEN ADJUSTED
- ESTABLISHMENT TEAM IS ACTIVE
- REGULAR PARTICIPATION AT COE DIRECTORS CONFERENCE





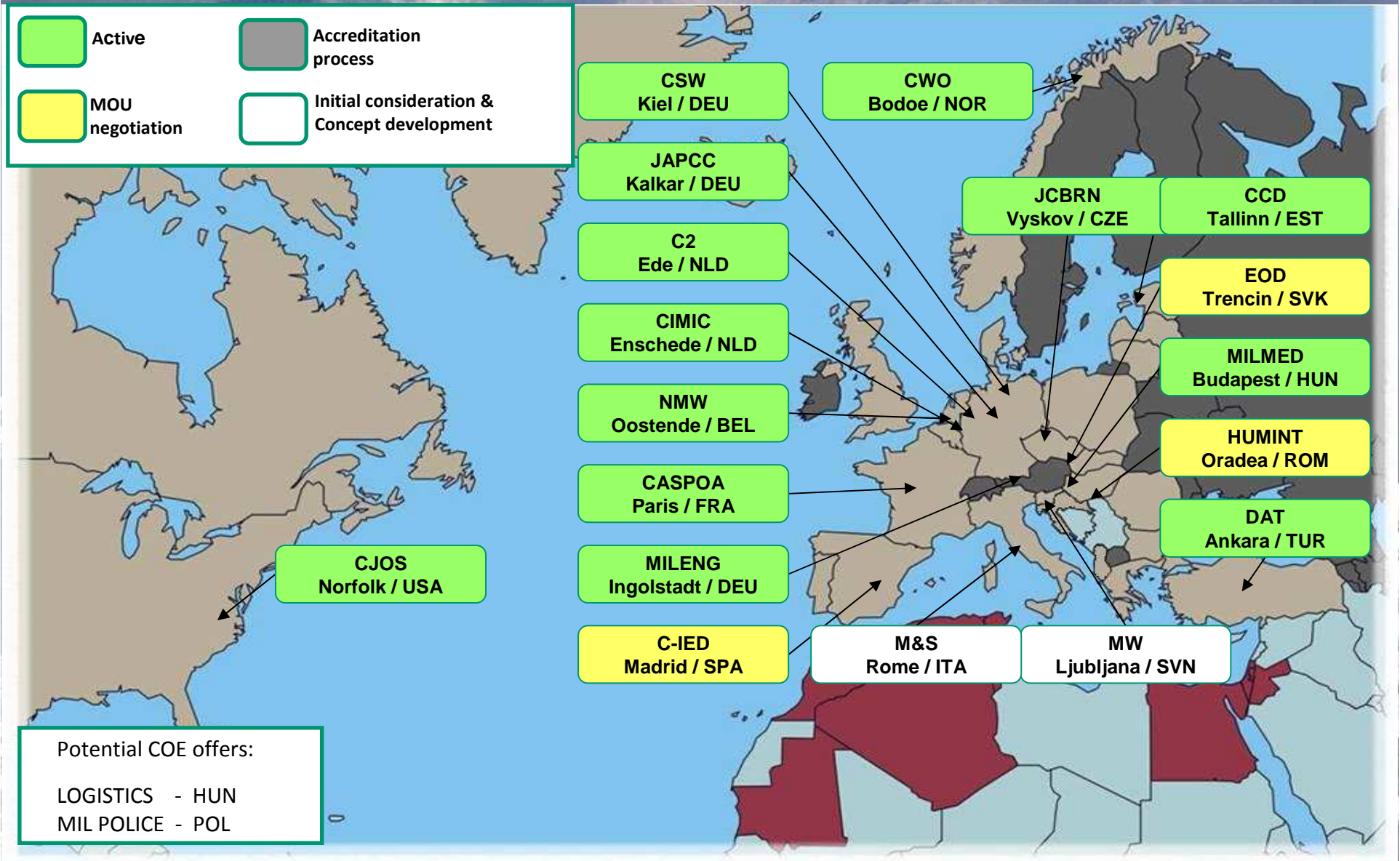
CURRENT COE MW DEVELOPMENT

- SME VISITS AS A KEY FOR FURTHER DEVELOPMENT
- TNCC MANUAL AS A GROUND FOR FURTHER STEPS
- DEVELOPMENT OF INFRASTRUCTURE
- CURRENT STATUS WITHIN ACT – “EXPECTING OFFER” AND AS A MULTI NATIONAL COE MW





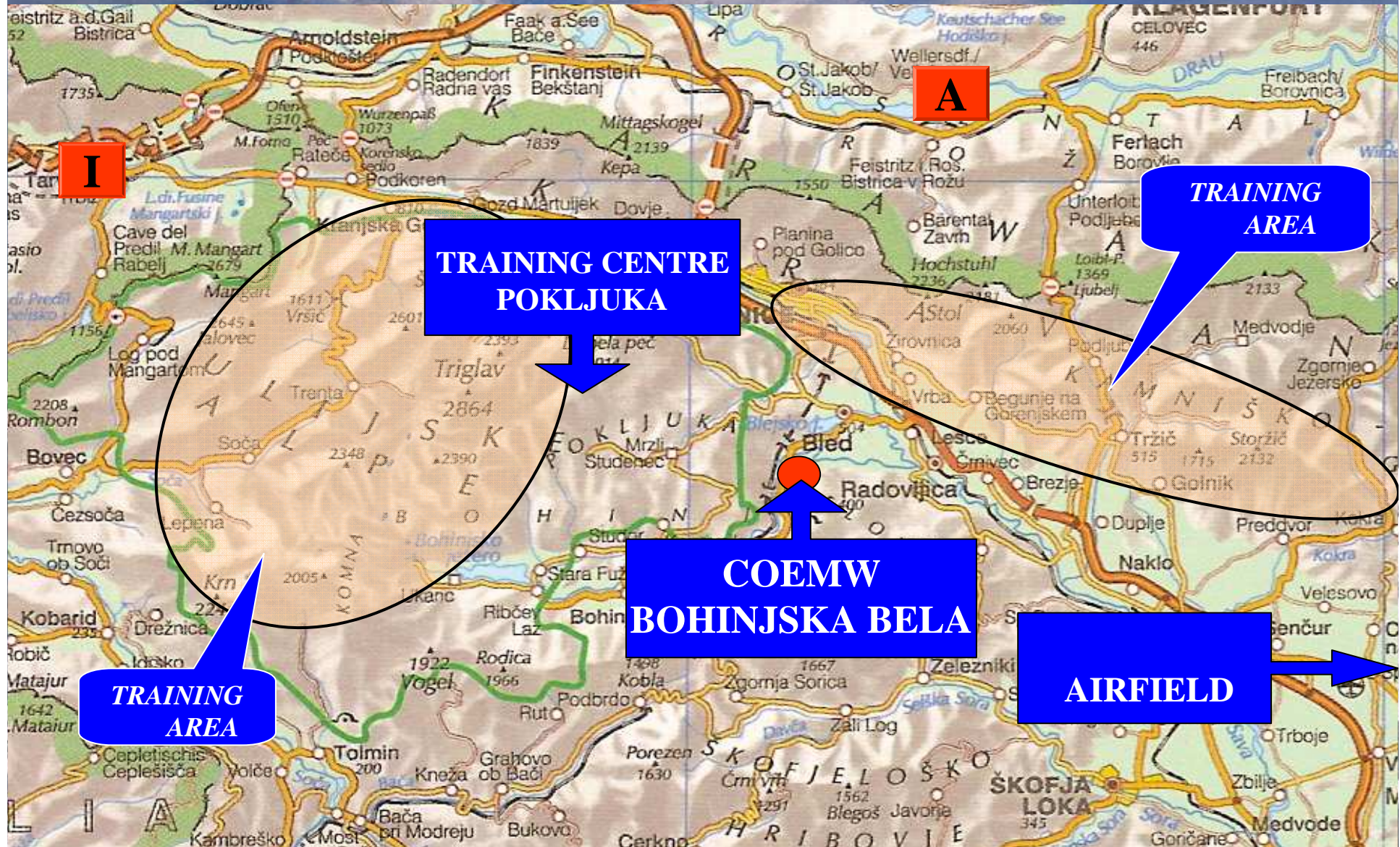
COE LOCATIONS AND STATUS





COEMW

LOCATION – BOHINJSKA BELA



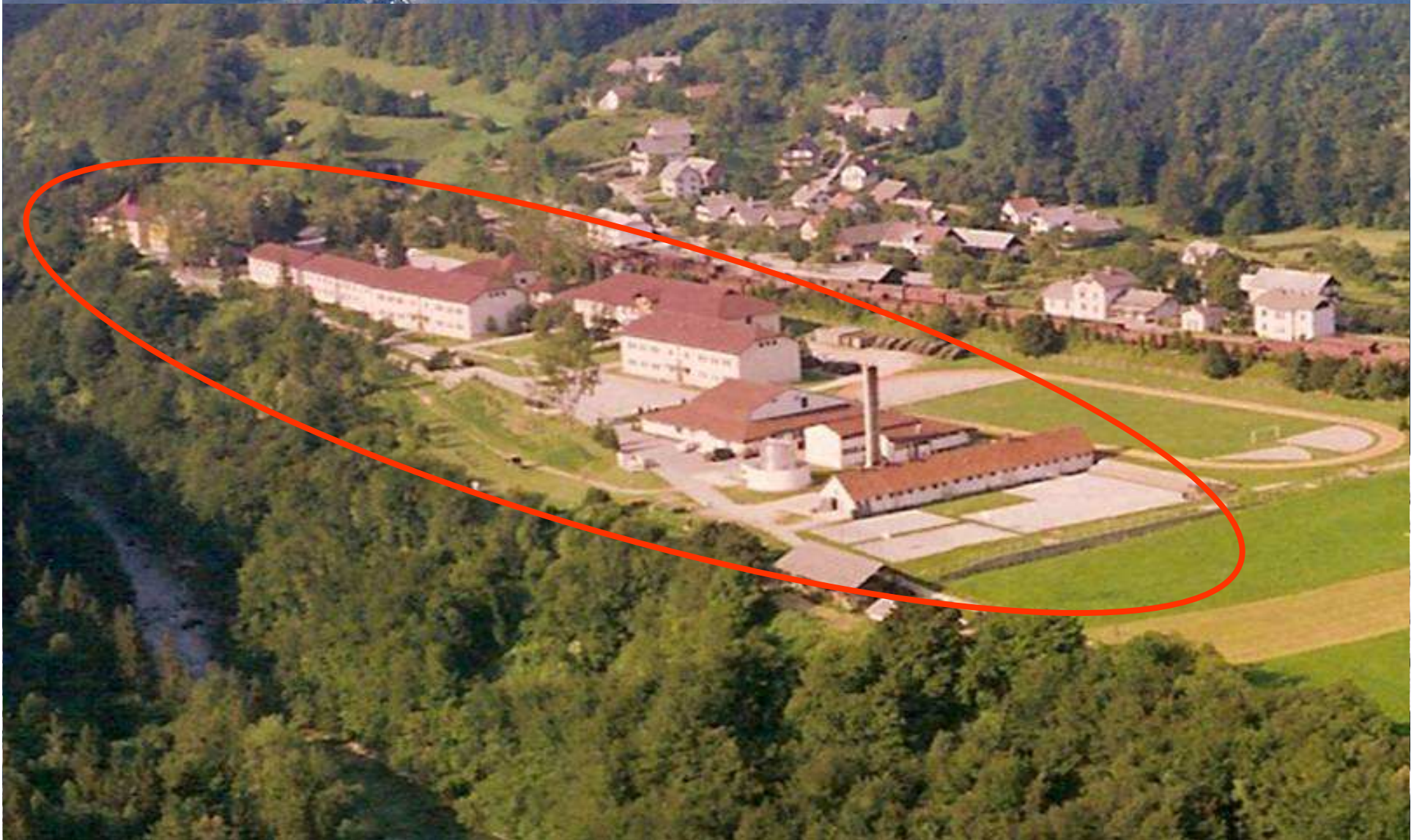
POKLJUKA TRAINING CENTRE



ACCOMMODATION CAPACITIES 100 PERSONS

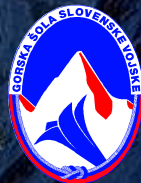


BOHINJSKA BELA BARRACKS





CURRENT NATIONAL COEMW STRUCTURE 2010





MILESTONES

	ACTIVITY	TIMELINE
1.	Initial conference for NATO in PfP countries	12.11.2009
2.	SME visits from participant countries: DEU, ITA, USA, AUT	15.10.2010
3.	Expend of the national and international cooperation network	02.11.2010
4.	1. MoU conference	10.11.2010
5.	2. MoU conference	29.03.2011
6.	Signing of MoU for Multinational COEMW	22.06.2011
7.	Accreditation of the NATO COEMW	15.05.2015





**MOU
PARTNERS**

ACT/TNCC

**UNIVERSITY
LJUBLJANA,
TNP, CIV.ORG.**

**NATO AND
PARTNER
NATIONS**

**COE MW
NETWORK**

**IAMMS
IFMS**

SAF UNITS

**SLOVENIAN
DEFENCE STAFF
COLLEGE**

COE CWO



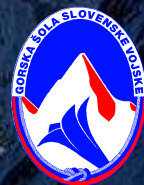
COEMW SUPPORT TO TRANSFORMATION





RESTRICTIONS

- **MAX. CAPACITY IS COMPANY SIZE UNIT**





WINTER: NOV. – APR.

OPEN ROCK AREA: 1500M – 2864M

WOODS: 600M – 1500M

CAVES COMPLEXES



TRAINING OF FOREIGN UNITS

- **USA: 1996, 1996, 1997, 1998, 2000, 2001, 2003, 2009, 2010**
- **HUNGARY: 1995, 1998, 1999, 2001, 2003**
- **AUSTRIA: 1997**
- **GBR: 1995, 2003**
- **CZECH REP: 1995, 1996, 1997, 1998, 2001, 2002, 2003, 2004, 2005, 2006, 2007**
- **FRANCE: TWICE IN 1996, 2000**
- **THE NETHERLAND: 1998, 2007**
- **CROATIA: 1999, 2000, 2001, 2003, 2004, 2005, 2007**
- **ITALY: 2000**
- **BELGIUM: 2001, 2002, 2003, 2004, 2005, 2006, 2008**
- **POLAND: 2001**
- **PORTUGAL: 2003**
- **SLOVAKIA: 2006**
- **LATVIA: 2009, 2010**
- **MACEDONIA (FYROM): 2004**
- **KAZAKHSTAN: 2007**

MILITARY EXPEDITION SAF “ALASKA 2006”



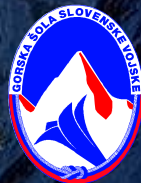
23 MAY – 28 JUN



PUBLICATIONS, MOVIES



- **MILITARY MOUNTAINEERING SKILLS**
- **MOINTAIN WARFARE TACTICS**
- **HOW TO SURVIVE IN WINTER I,II (DVD)**
- **USE OF CLIMBING ROPES (DVD)**
- **PROTECTION AGAINST SNOW AVALANCHES (DVD)**
- **MOUNTAIN WARFARE (VHS, DVD)**





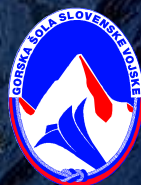
DECISIVE POINTS

- COEMW NETWORK AT NATIONAL LEVEL
- FUTURE PARTICIPANTS RESPOND
- COORDINATION PROCESS ABOUT CONCEPT AND MOU
- FURTHER SUPPORT OF ACT





QUESTIONS ?





CONTACT INFORMATION

LTC BOŠTJAN BLAZNIK

phone: 0038645763201

e-mail: bostjan.blaznik@mors.si

MAJ MIHA KUCHAR

phone: 0038645763207

e-mail: miha.kuhar@mors.si

MAJ SABINA PERKO

phone: 0038612305263

e-mail: sabina.perko@mors.si

